

Leading The Way . . .



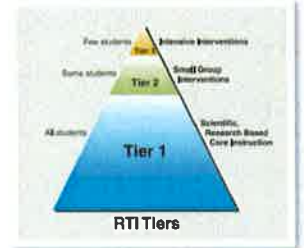
Using MTSS to Support All Students



The 5 Elements of a Multi-Tiered System of Support (www.MiBLSi.cenmi.org)

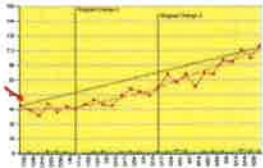
1. Universal Screening

A universal screener is an assessment tool that is used as the first step in determining whether students are on track for meeting future outcomes/goals or at-risk for learning problems (e.g. reading, math, behavior, writing).



2. Progress Monitoring

Progress monitoring involves frequent assessment of student's knowledge, skills and the impact of instruction/intervention on student performance. The assessments used provide valid and reliable information that is sensitive to growth overtime.



3. Data Based Decision Making and Problem Solving

Decision rules for determining student response to instruction and intervention are established based on "best practices" and include a combination of program quality/fidelity data and student outcome data. Decision rules are established, taught and applied consistently across multiple levels (e.g., individual student, classroom, grade level).



4. Evidenced Based Core Curriculum and Continuum

All students have access to evidence-based core curriculum in order to receive instruction in the areas of reading and behavior. Core curriculum is defined as the learning standards, materials, resources, and instructional strategies necessary to effectively teach the standards.

5. Focus on Fidelity of Implementation

There is alignment between program quality data and outcome data. Where there is not alignment between program quality data and outcome data, teams engage in problem solving to determine if one or more of the following exist; Poor implementation fidelity of evidence-based core programs, practices, and/or interventions, Core programs, practices and/or interventions are not evidence-based, Outcomes data are not collected with fidelity.



**Ingham Intermediate
School District**
A Regional Educational Service Agency